



TRANSPORTATION ADVISORY COMMITTEE

SEPTEMBER 16, 2022

10:00 AM – 12:00 PM

ZOOM LOGON INFO

Join Zoom Meeting

<https://us02web.zoom.us/j/83588239419>

Meeting ID: 835 8823 9419

One tap mobile

+13092053325,,83588239419# US

+13126266799,,83588239419# US (Chicago)

Dial by your location

+1 309 205 3325 US

+1 312 626 6799 US (Chicago)

+1 646 558 8656 US (New York)

+1 646 931 3860 US

+1 301 715 8592 US (Washington DC)

+1 346 248 7799 US (Houston)

+1 386 347 5053 US

+1 564 217 2000 US

+1 669 444 9171 US

+1 669 900 9128 US (San Jose)

+1 719 359 4580 US

+1 253 215 8782 US (Tacoma)

Meeting ID: 835 8823 9419

Find your local number:

<https://us02web.zoom.us/u/kbBy0VfNW3>

CALL TO MEETING & ROLL CALL

AGENDA

- 1. REVIEW AND VOTE ON MINUTES***
- 2. TEN YEAR PLAN**
 - Review & Approve Criteria Weights *
 - Review & approve Project Rankings *
- 3. UPDATES**
 - NCC Projects
 - Updates From Communities
- 4. REGIONAL TRANSPORTATION PLAN**
- 5. OTHER BUSINESS**
- 6. ADJOURN**

REVIEW & VOTE ON MINUTES

TEN YEAR PLAN

- 10 proposals received, 8 eligible
- Scoring of projects
- HEB cost estimates and scoping
 - » coordination with NHDOT
- Submit to NHDOT

Ten-Year Plan Process

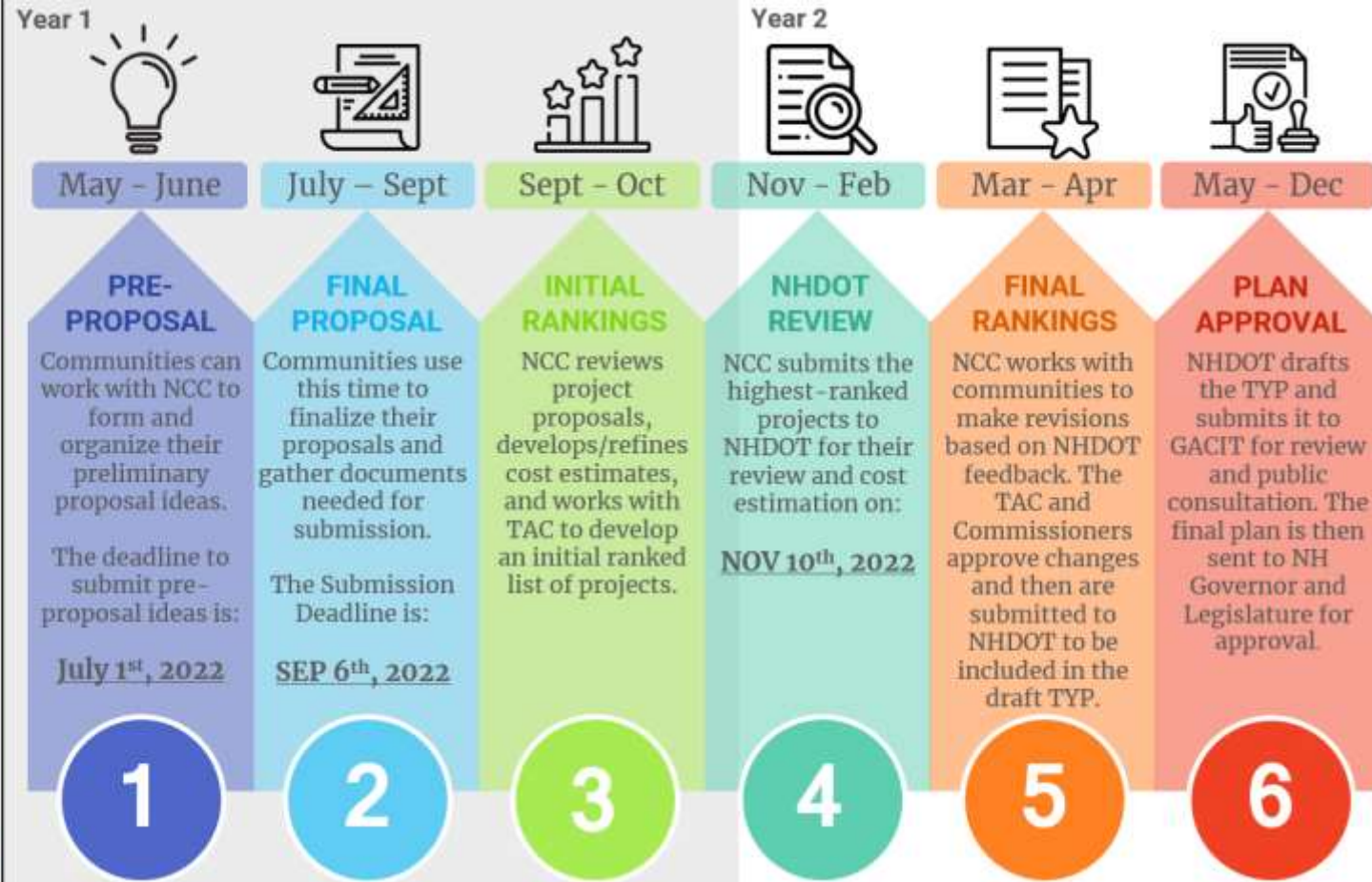
TYP
Ten-Year Plan

NCC
North Country Council

TAC
Transportation Advisory Committee

NHDOT
New Hampshire Department of Transportation

GACIT
Governor's Advisory Commission on Intermodal Transportation



TEN YEAR PLAN

Weights and Criteria

- **State Guidance**
- **NCC Staff Weight-setting process**
- **Criteria Weights Confirmation Meeting**
- **Scoring of Projects with Weighted Criteria**

Criteria Weights	
Criteria	Weight
Economic Development	12.3%
Local & Regional	7.6%
Freight Movement	4.6%
Equity, Environmental Justice, and Accessibility	13.0%
Equity & Environmental Justice	5.5%
Accessibility	7.5%
Mobility	13.8%
Mobility Need & Performance	6.4%
Mobility Intervention	7.4%
Natural Hazard Resiliency	13.5%
Hazard Risk	5.8%
Hazard Mitigation	7.8%
Network Significance	13.0%
Traffic Volume	5.4%
Facility Importance	7.6%
Safety	15.0%
Safety Performance	7.3%
Safety Measures	7.8%
State of Repair	11.0%
State of Repair	6.3%
Maintenance	4.8%
Support	8.5%
Support	8.5%
	100.0%

TEN YEAR PLAN

Total Regional Allocation: \$5,984,000 / \$7,180,000

<p>Shelburne Route 2</p> <p>Cost:</p> <p>Not Included</p> <p>6.22</p>	<p>Gorham Route 16</p> <p>Cost:</p> <p>\$2,772,520*</p> <p>5.65</p>
<p>Randolph Route 16</p> <p>Cost:</p> <p>Not Included</p> <p>5.27</p>	<p>Conway Intervale Cross Rd</p> <p>Cost:</p> <p>Not Included</p> <p>5.09</p>

TEN YEAR PLAN

Shelburne Route 2

Shelburne- Route 2 Flooding Mitigation

Eliminate or mitigate flooding conditions that are present on Route 2 adjacent to Reflection Pond



TEN YEAR PLAN

Shelburne Route 2



TEN YEAR PLAN

Shelburne Route 2

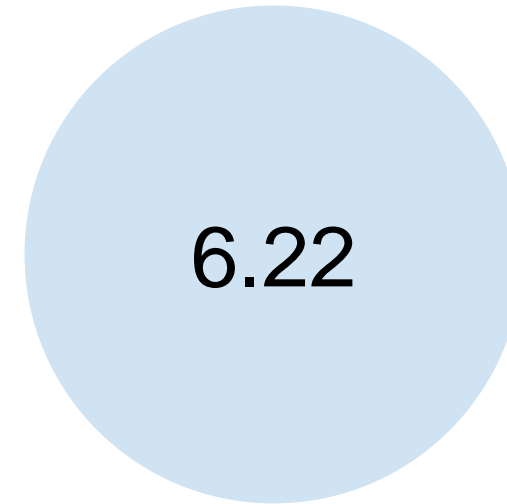
Project Strengths:

- Improves Local & Regional Economic Development
- Improves freight on a major route
- Reduces Hazard Risk
- Improves Hazard Mitigation
- Improves State of Repair

Applicant Estimated Cost: Not Included

*Cost not yet verified by on-call engineer

Weighted Criteria Score:



TEN YEAR PLAN

Gorham Route 16

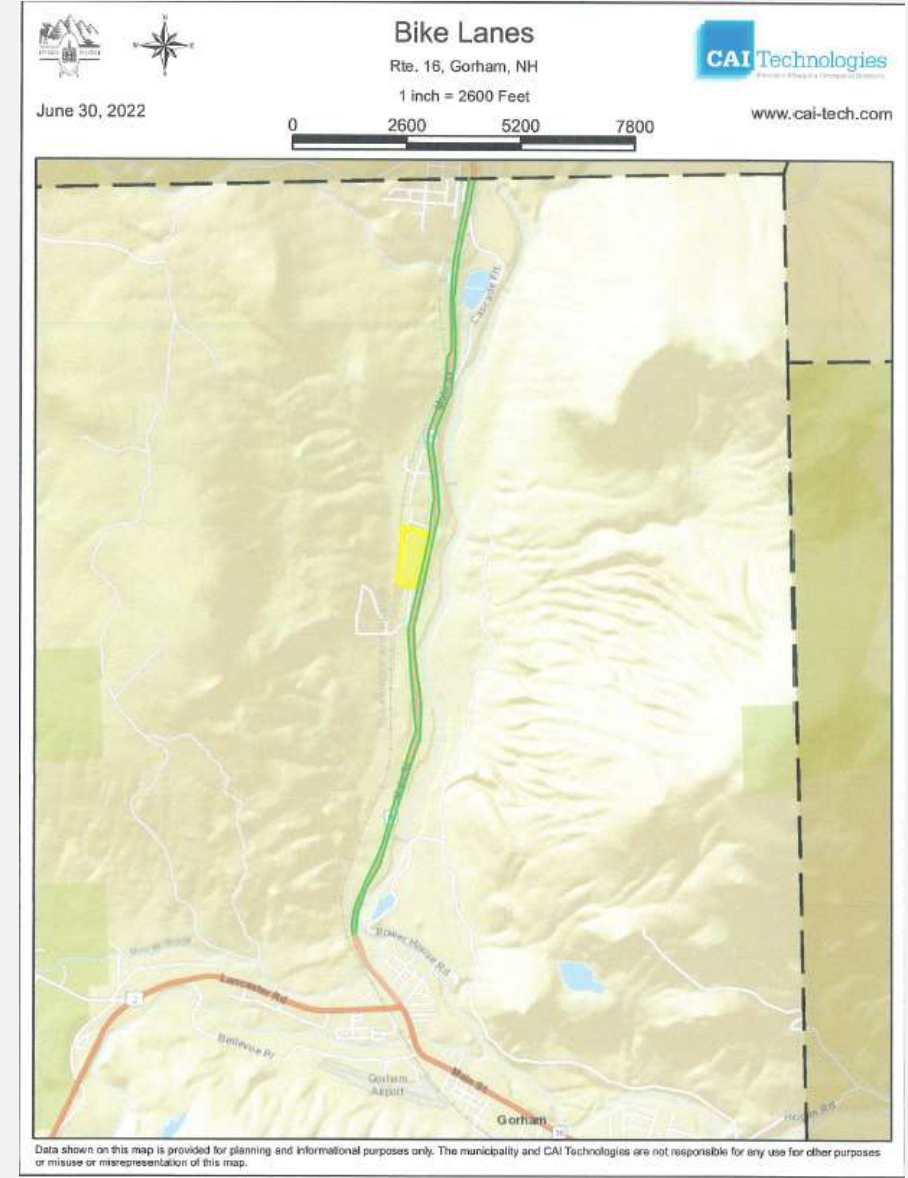
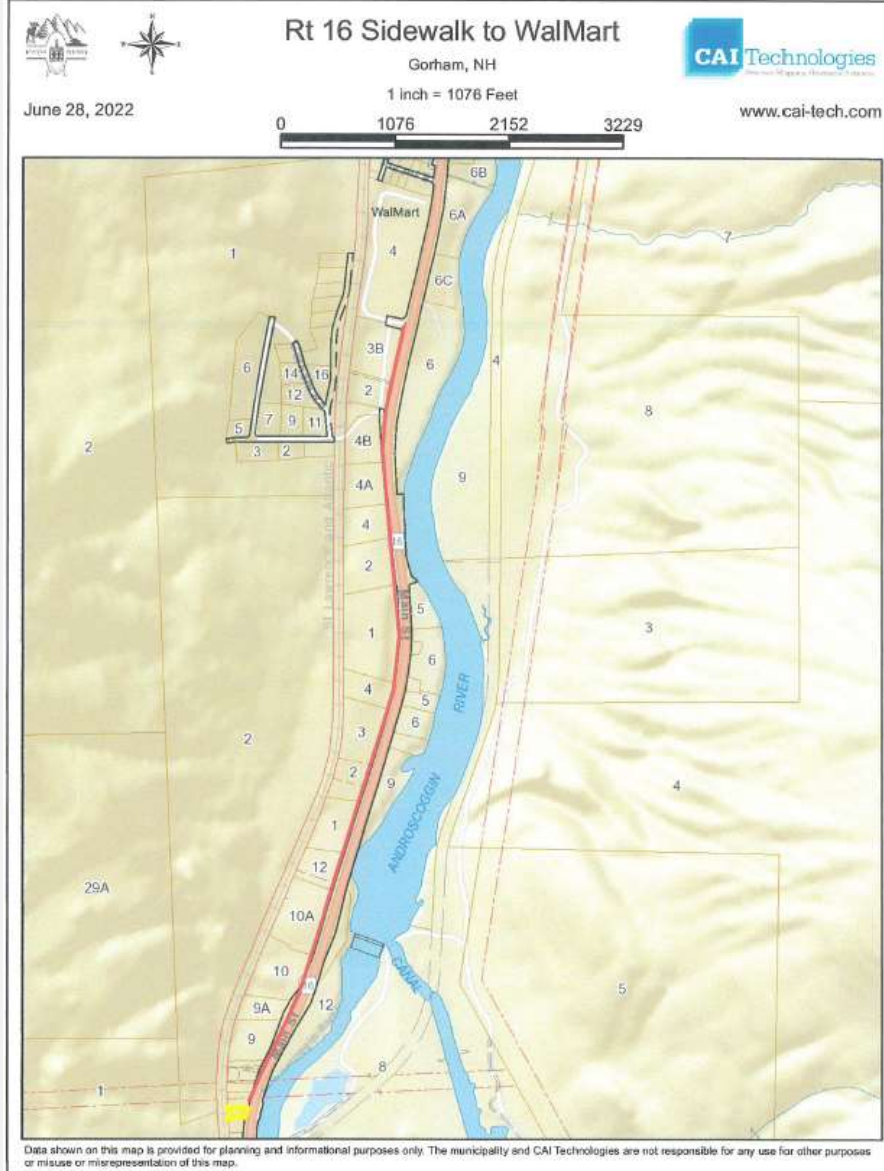
Gorham-Route 16

Installation of sidewalk infrastructure on the Berlin-Gorham road from approximately 429 Main St to 561 Main St (Walmart)



TEN YEAR PLAN

Gorham Route 16



TEN YEAR PLAN

Gorham Route 16



Sidewalk infrastructure and bike lanes

TEN YEAR PLAN

Gorham Route 16

Project Strengths:

- Improves safety of cyclists
- Improves mobility of pedestrians and cyclists
- Addresses accessibility

Applicant Estimated Cost: \$2,772,520

*Cost not yet verified by on-call engineer

Weighted Criteria Score:

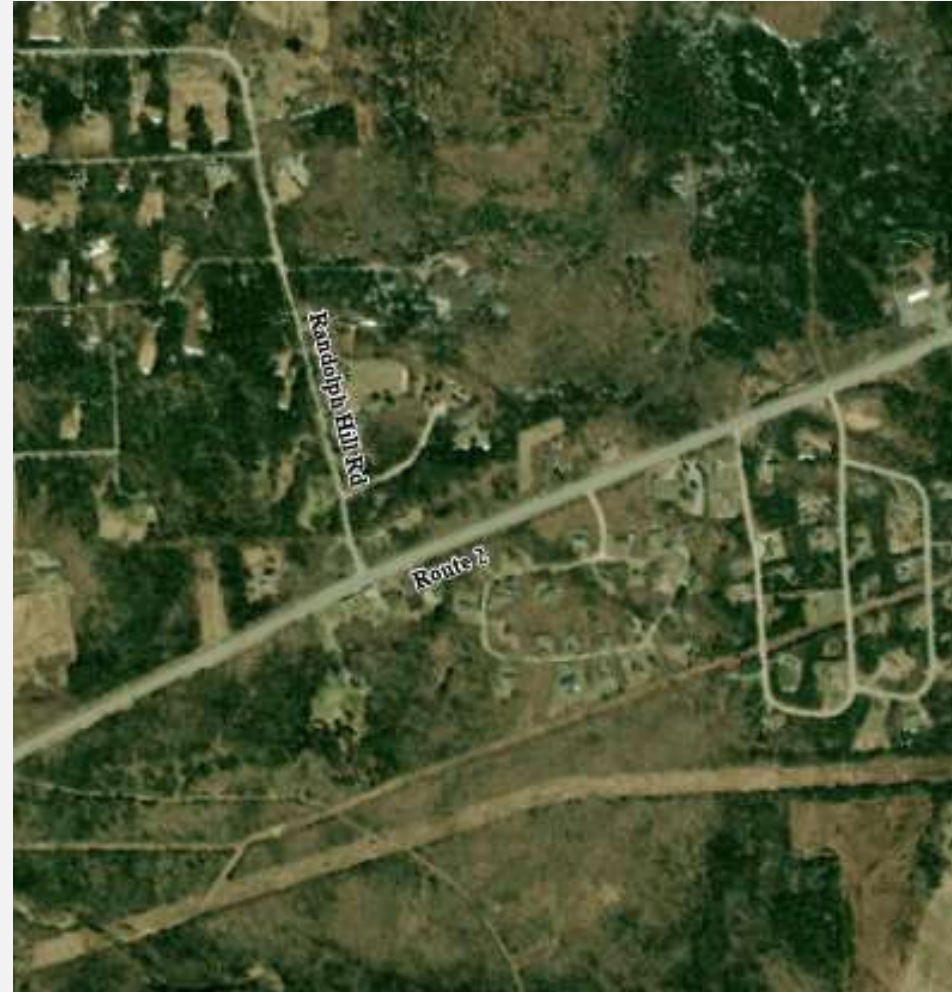


TEN YEAR PLAN

Randolph Route 2

Randolph- Route 2 & Randolph Hill Rd

Widening of Route 2 to accommodate a turning lane and additional travel lane to improve safety of those entering and exiting the roadway



TEN YEAR PLAN

Randolph Route 2

Intersection SE



Intersection NW

TEN YEAR PLAN

Randolph Route 2

Project Strengths:

- Improves safety for drivers
- Improves freight on a major route

Applicant Estimated Cost: Not Included

*Cost not yet verified by on-call engineer

Weighted Criteria Score:



TEN YEAR PLAN

Conway – Intervale Cross Rd

Route 16 & Intervale Crossroad
Intersection Safety Improvements

Installation of traffic calming
measures/ safety improvements to
busy state-local intersection in
North Conway



TEN YEAR PLAN

Conway Intervale Cross Rd



TEN YEAR PLAN

Conway Intervale Cross Rd

Project Strengths:

- Improves safety of pedestrians
- Improves mobility of pedestrians and drivers
- Improves traffic volume to important facilities

Applicant Estimated Cost: Not Included

*Cost not yet verified by on-call engineer

Weighted Criteria Score:



TEN YEAR PLAN

Lincoln I-93 to Kanc

Lincoln- Corridor Study

Corridor study of the traffic and congestion issues on the approximate 2.5 mile stretch from I-93 to Route 12 & Kancamagus Highway



TEN YEAR PLAN

Lincoln I-93 to Kanc



TEN YEAR PLAN

Lincoln I-93 to Kanc

Project Strengths:

- Will study traffic issues & congestion in downtown area
- Will present recommendations to mitigate congestion

Applicant Estimated Cost: Not Included

*Cost not yet verified by on-call engineer

Weighted Criteria Score:



TEN YEAR PLAN

Gorham Libby St

Gorham- Route 16 to Libby St

Installation of sidewalk infrastructure from the south intersection of Route 16 and Libby St, north to Libby Recreation Complex



TEN YEAR PLAN

Gorham Libby St



TEN YEAR PLAN

Gorham Libby St

Project Strengths:

- Improves mobility of pedestrians
- Addresses equity & environmental justice

Applicant Estimated Cost: \$433,320

*Cost not yet verified by on-call engineer

Weighted Criteria Score:



TEN YEAR PLAN

Whitefield Rails-to-Trails

Whitefield- Rails-to-Trails

5.2 miles of rail bed restoration, track and tie removal, surface grading, and crowning work to connect to existing rail trail network for walking, cycling, horse riding, and snowmobile use.



TEN YEAR PLAN

Whitefield Rails-to-Trails

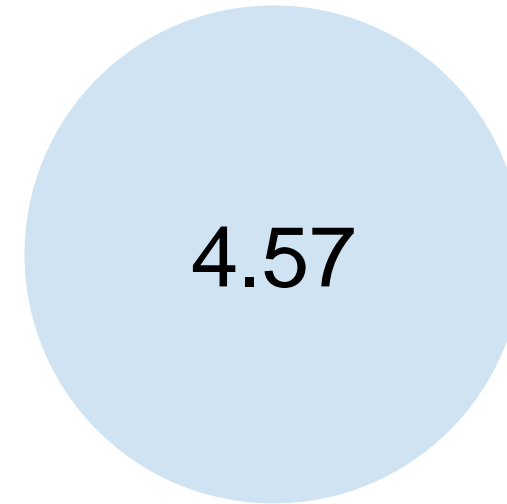
Project Strengths:

- Improves Local & Regional Economic Development
- Improves Mobility and Accessibility
- Supported in Whitefield Master Plan & other regional/ state plans
- Connects to a larger regional trail network

Applicant Estimated Cost: \$6,300,000*

*Cost not yet verified by on-call engineer

Weighted Criteria Score:

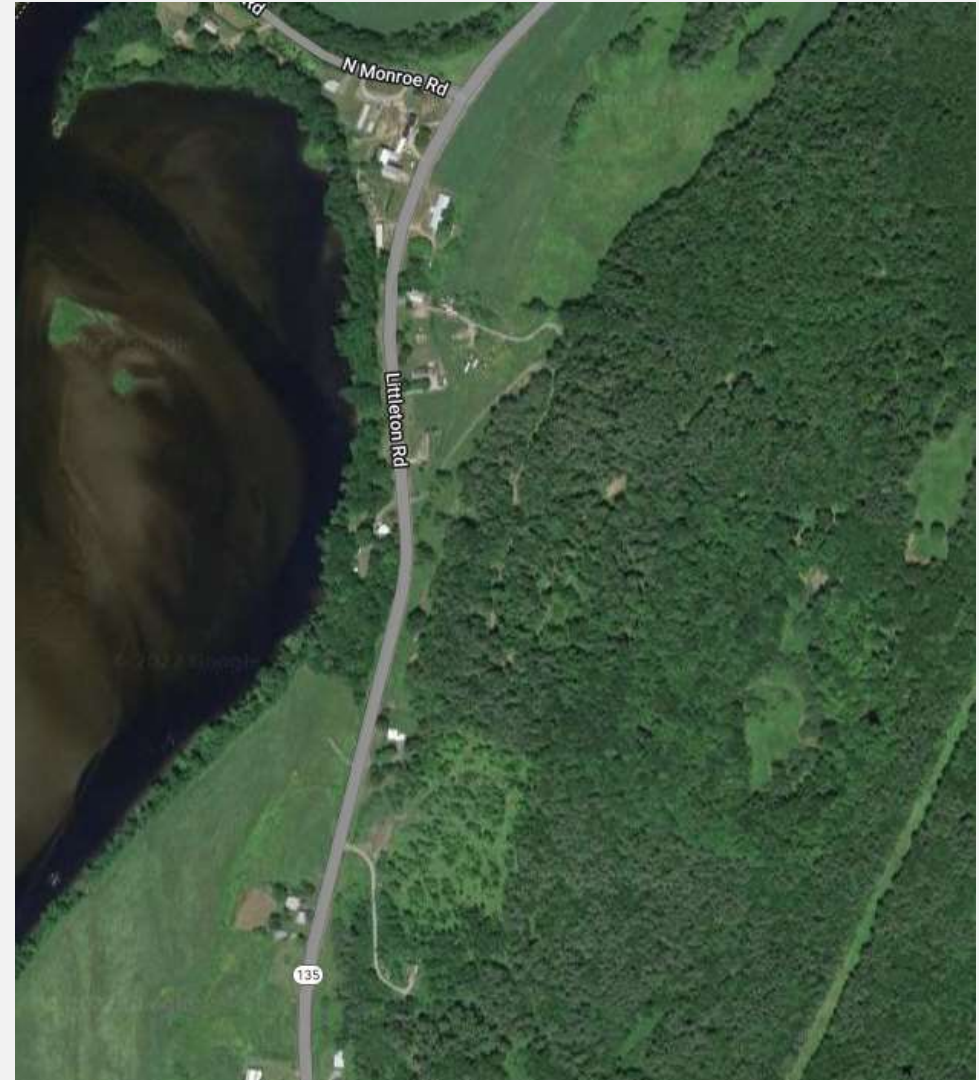


TEN YEAR PLAN

Monroe Route 135 N

Monroe- Route 135 N

Roadway repair/ rehabilitation due to concerns about erosion of roadway into Connecticut River



TEN YEAR PLAN

Monroe 135 N

Project Strengths:

- Reduces Hazard Risk
- Improves Hazard Mitigation

Applicant Estimated Cost: Not Included

*Cost not yet verified by on-call engineer

Weighted Criteria Score:

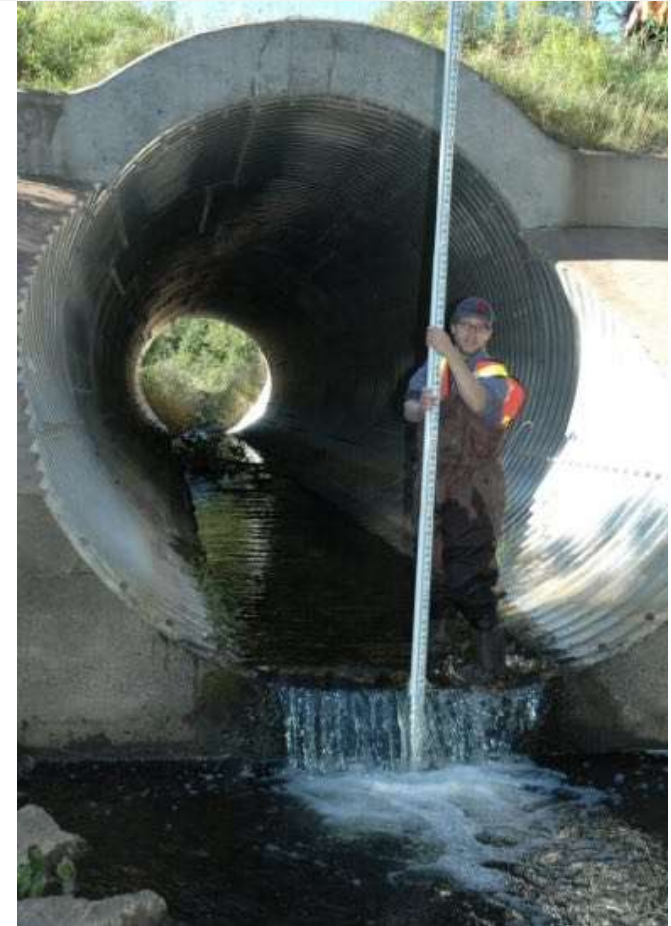


REGULAR UPDATES

NCC PROJECTS

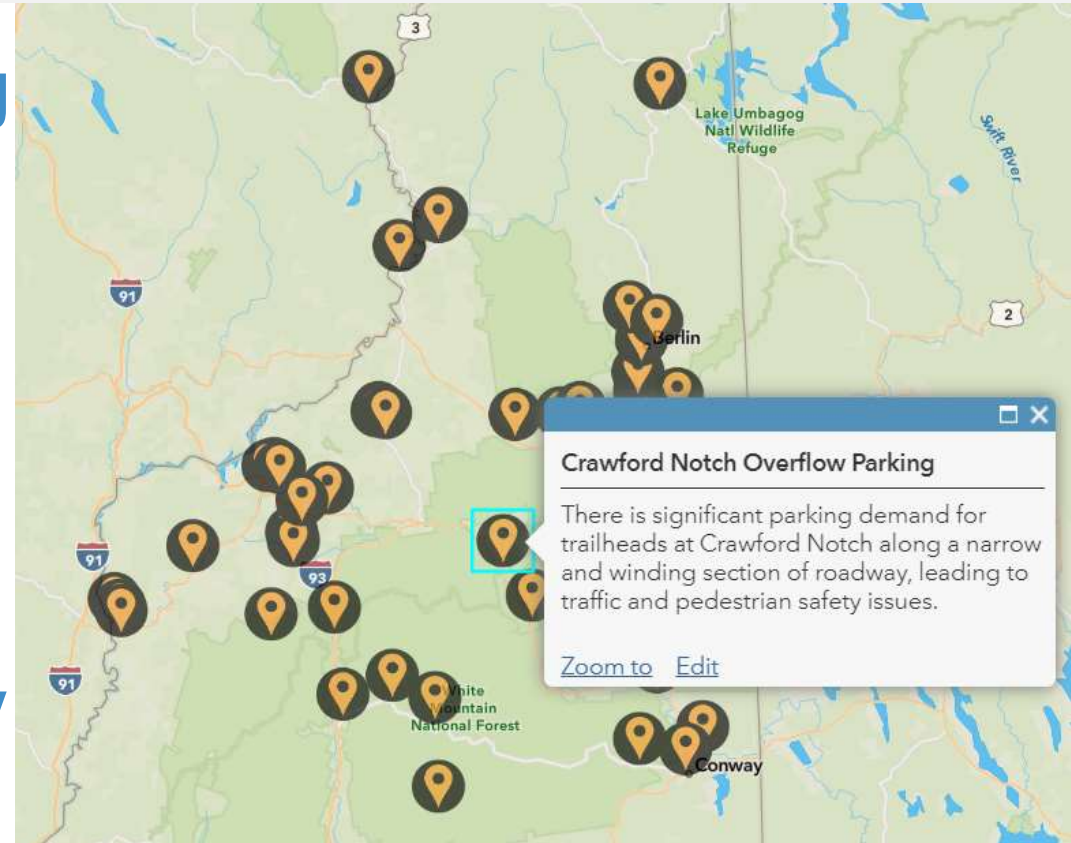
- **Berlin RSMS**
 - » **Scope of the Project**
 - » **Progress & Remaining Work**
- **Traffic Counts**
 - » **Season is winding down**
 - » **Seasonal Counts**

COMMUNITY UPDATES



REGIONAL TRANSPORTATION PLAN

- Delayed draft until TYP Scoring Process is complete
- Will be rewriting sections and updating others
- Expanding on Recommendations Section
- Adding an Executive Summary



FINAL THOUGHTS/COMMENTS

