

NHDOT Consultant Selection Committee Presentation

READY FOR THE NEXT OPPORTUNITY

Presented by:

Jay Poulin ^{PE} | President

Christopher Fournier ^{PE, SE} | Vice President / Director of Structural Engineering

Jordan Pike ^{PE} | Senior Transportation Engineer

Thursday, September 22, 2022

HEB
Engineers
CIVIL • STRUCTURAL • SURVEY

HEB AT A GLANCE



HEB
Engineers
CIVIL • STRUCTURAL • SURVEY



HEB AT A GLANCE

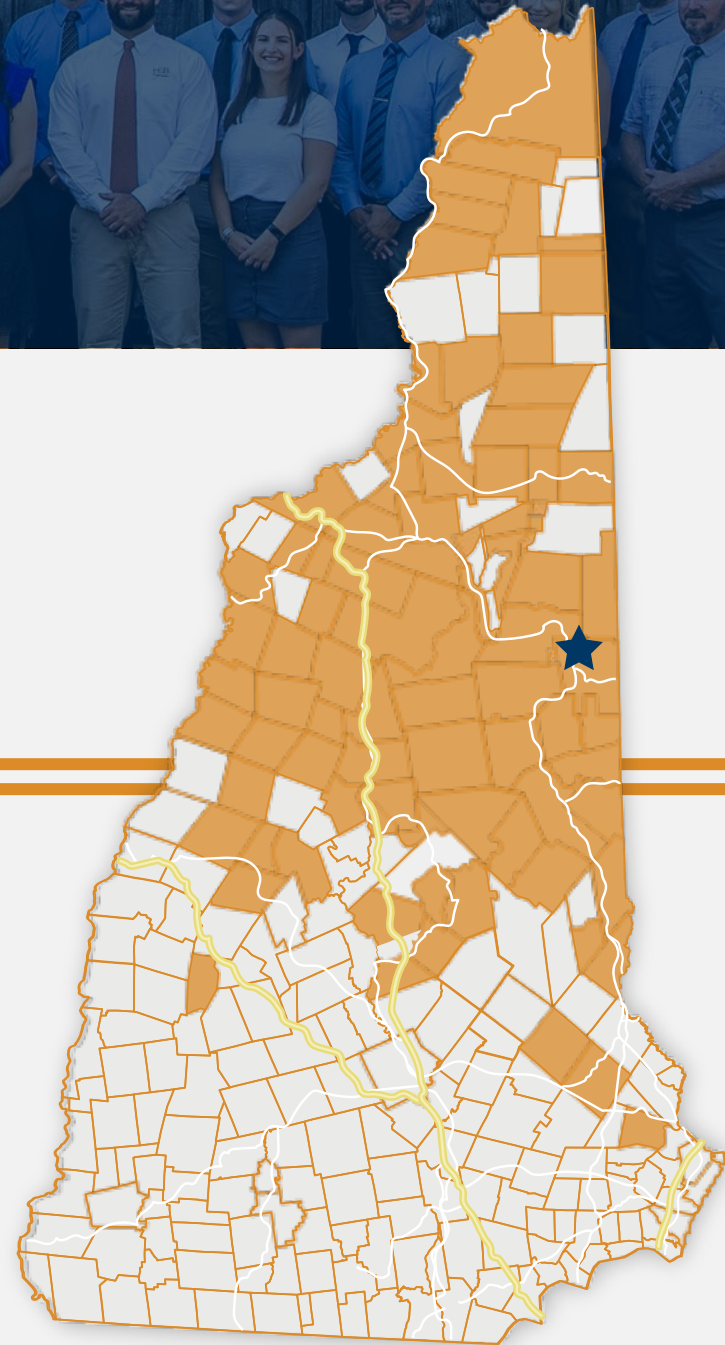
***Headquartered in
North Conway, NH***



HEB AT A GLANCE

*Historically,
Strong Municipal
Focus*

- MUNICIPALITIES SERVICED BY HEB
- ★ HEB ENGINEERS OFFICE





HEB AT A GLANCE

*Headquartered in
North Conway, NH*

*Historically,
Strong Municipal
Focus*

*Growing State &
Federal Agency
Experience*



HEB AT A GLANCE

*Growing State &
Federal Agency
Experience*

NHDOT
*On-Call Bridge
Design*

**Completed 5-Yr
Term (2021)**

NHDAS
*DPW
Statewide*

**5th Consecutive
2-Yr Term**

USDA
*Forest Service
IDIQ*

**10th Year Engineering
7th Year Surveying**

HEB AT A GLANCE

CIVIL ENGINEERING



Site Development
Highway
Airport
Construction Administration

IN HOUSE SERVICES



LPA Experience

HEB AT A GLANCE

CIVIL ENGINEERING



**Bridges
Structures
Construction Administration**

STRUCTURAL ENGINEERING



NHDOT & SBA Experience

IN HOUSE SERVICES

HEB AT A GLANCE

CIVIL ENGINEERING

STRUCTURAL ENGINEERING

IN HOUSE SERVICES

LAND SURVEYING



**Topographic
Drone**



ROW and Easement

RELEVANT PROJECT EXPERIENCE

HEB
Engineers
CIVIL • STRUCTURAL • SURVEY

RELEVANT EXPERIENCE

Bridge Replacement



Loon Mountain Bridge | Lincoln, NH

RELEVANT EXPERIENCE

Bridge Replacement



Clark Pond Road Bridge | Haverhill, NH

RELEVANT EXPERIENCE

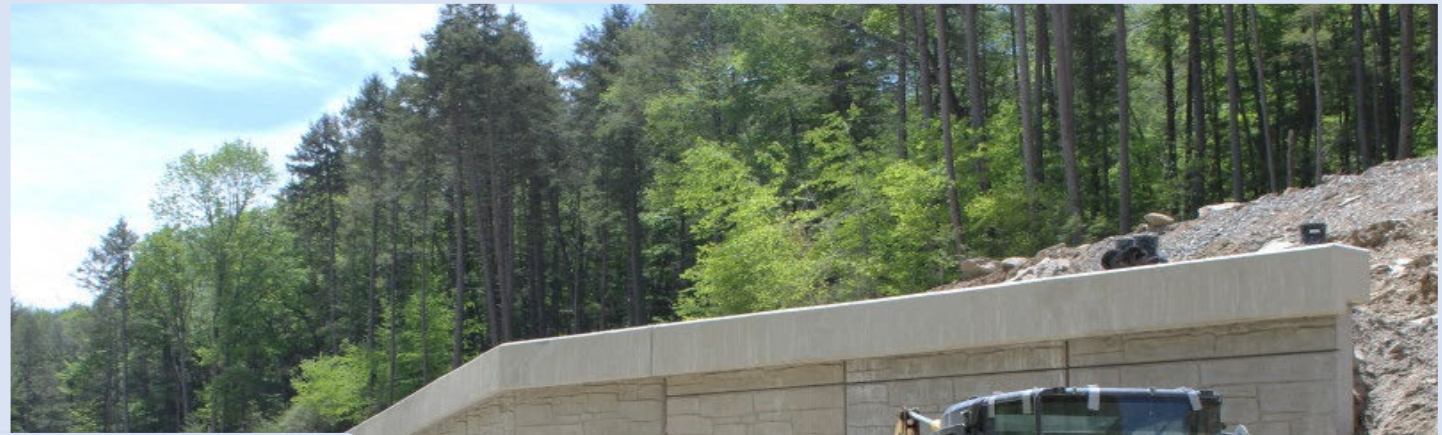
Bridge Replacement



**Waukewan Road | Center Harbor-New Hampton, NH
(24579)**

RELEVANT EXPERIENCE

Safety Improvements



Route 133 | Bridgewater, CT

RELEVANT EXPERIENCE

Intersection Improvements



Route 111 & Route 116 | Monroe, CT

RELEVANT EXPERIENCE

Transportation Planning



Regional Planning Commissions (NCC & LRPC)

RELEVANT EXPERIENCE

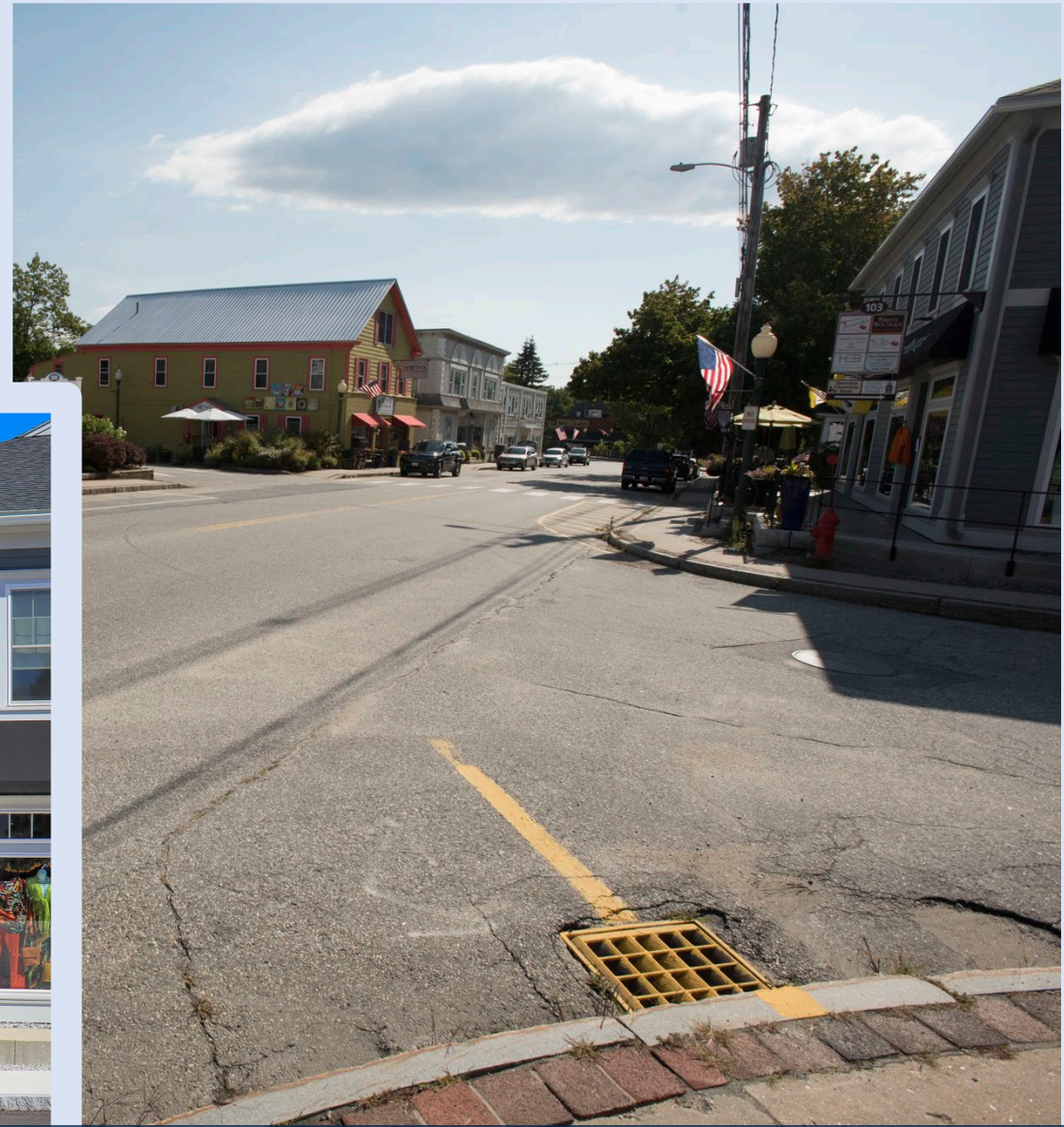
Corridor Improvements



NH 16 Reconstruction | Berlin, NH

RELEVANT EXPERIENCE

Corridor Improvements



Main Street Reconstruction | Bridgton, ME

RELEVANT EXPERIENCE

Corridor Improvements



NH 16 Reconstruction | Conway, NH
(40018)

THE HEB ADVANTAGE

HEB
Engineers
CIVIL • STRUCTURAL • SURVEY

THE HEB ADVANTAGE



**THE Northern
Consulting Firm**



**Trusted Municipal
Relationships**



**Strong Ancillary
Support Services**

HEB

Engineers

CIVIL • STRUCTURAL • SURVEY



WE'RE READY

Thank You!