



TRANSPORTATION ADVISORY COMMITTEE

SEPTEMBER 19, 2024

1:00 PM – 3:00 PM

ZOOM LOGON INFO

Join Zoom Meeting

<https://us02web.zoom.us/j/82906768989>

Meeting ID: 829 0676 8989

One tap mobile

+13126266799,,82906768989# US (Chicago)

+16465588656,,82906768989# US (New York)

Dial by your location

- +1 312 626 6799 US (Chicago)
- +1 646 558 8656 US (New York)
- +1 646 931 3860 US
- +1 301 715 8592 US (Washington DC)
- +1 305 224 1968 US
- +1 309 205 3325 US
- +1 253 205 0468 US
- +1 253 215 8782 US (Tacoma)
- +1 346 248 7799 US (Houston)
- +1 360 209 5623 US
- +1 386 347 5053 US
- +1 507 473 4847 US
- +1 564 217 2000 US
- +1 669 444 9171 US
- +1 669 900 9128 US (San Jose)
- +1 689 278 1000 US
- +1 719 359 4580 US

Meeting ID: 829 0676 8989

Find your local number: <https://us02web.zoom.us/j/kojuX2nkl>

CALL TO MEETING & ROLL CALL

*indicates a vote is required

AGENDA

1. REVIEW AND VOTE ON MINUTES*
2. TEN YEAR PLAN
 - Review & Approve Criteria Weights *
 - Review Project Proposals
 - Review & Approve Preliminary Rankings *
3. UPDATES
 - NCC Projects
 - Regional Plan & Regional Transpo. Plan
 - Scenic Byways
 - Community Updates
4. OTHER BUSINESS
5. ADJOURN

REVIEW & VOTE ON MINUTES

TEN YEAR PLAN

- 19 proposals received, 15 eligible
- Weights and Criteria
- Project Scoring & Prelim. Ranking
- HEB cost estimates and scoping
» coordination with NHDOT
- Submit to NHDOT

Ten-Year Plan Process

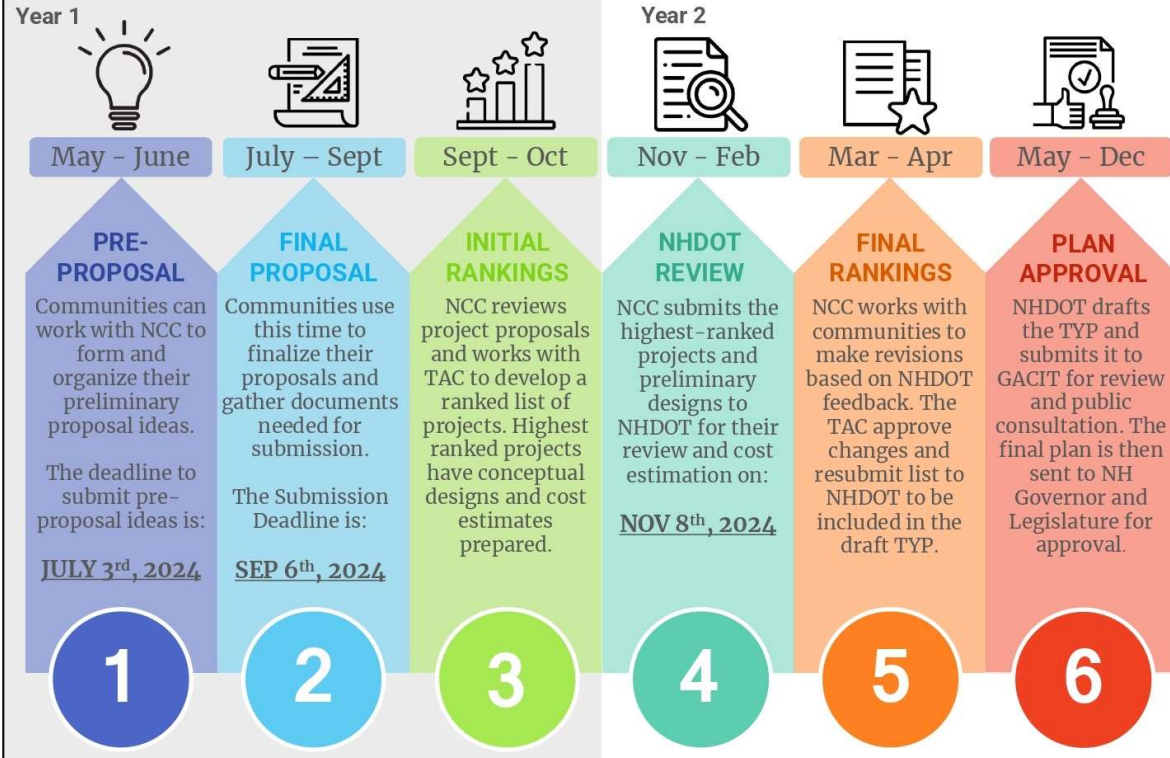
TYP
Ten-Year Plan

NCC
North Country Council

TAC
Transportation Advisory Committee

NHDOT
New Hampshire Department of Transportation

GACIT
Governor's Advisory Commission on Intermodal Transportation



TEN YEAR PLAN

Weights and Criteria

- State Guidance
- NCC Staff Weight-setting process
- Criteria Weights Confirmation Meeting
- Scoring of Projects with Weighted Criteria

Criteria Weights	
Criteria	Weight
Economic Development	8.3%
Local & Regional	4.5%
Freight Movement	3.8%
Equity, Environmental Justice, and Accessibility	12.8%
Equity & Environmental Justice	4.8%
Accessibility	8.0%
Mobility	14.3%
Mobility Need & Performance	5.8%
Mobility Intervention	8.5%
Natural Hazard Resiliency	16.5%
Hazard Risk	7.5%
Hazard Mitigation	9.0%
Network Significance	14.0%
Traffic Volume	6.5%
Facility Importance	7.5%
Safety	17.8%
Safety Performance	8.0%
Safety Measures	9.8%
State of Repair	8.3%
State of Repair	5.8%
Maintenance	2.5%
Support	8.3%
Support	8.3%
	100.0%

TEN YEAR PLAN

Preliminary Scoring Process

- **NHDOT/RPC Guidance Criteria**
- **Application review**
 - **Forms, Documents, Maps**
 - **Other Resources**
- **Scoring of Projects with Weighted Criteria**
- **Staff confirmation of preliminary Rankings**

TYP Project Proposal Preliminary Ranking	
Score	Project Name
5.59	Project 1: Albany Intersection of NH113 & NH16
5.46	Project 13: Randolph Int of US2 and Randolph Hill & Raycrest
5.08	Project 2: Bethlehem Sidewalk to Elementary School
4.9	Project 15: Whitefield Rail Trail
4.72	Project 14: Sugar Hill Traffic Calming Along NH117
4.48	Project 8: Lancaster Safe Pedestrian Walkway to School
4.47	Project 9: North Woodstock NH112 and US3 Intersection
4.46	Project 11: Pittsburg Roadway Aprons Along US3
4.39	Project 5: Jackson NH16 Corridor Safety
4.23	Project 7: Lancaster Page Hill & US-3 Intersection
4.09	Project 4: Dalton Pedestrian/Bike Lanes Along NH135
3.86	Project 10: Pittsburg Hill Rd / Happy Corner Bridge
3.72	Project 12: Pittsburg Main Street Sidewalks & Curb
3.44	Project 3: Dalton Crosswalk at Bridge Hill Rd and NH135
3.44	Project 6: Lancaster Downtown Pedestrian Safety Study

TEN YEAR PLAN

Total Regional Allocation: Approximately \$7,180,000

Albany NH16 & NH113

Improvements

Cost: \$3,406,200

(current design)

5.59

Randolph US2

Intersection Safety

Cost: \$ 4,412,000

(2022 design)

5.46

Bethlehem Sidewalk

Cost: \$ 765,000

(2023 figures)

5.08

Whitefield Rail Trail

Cost: \$4,100,000

(2024 estimate)

4.90

Sugar Hill Traffic

Calming

Cost: \$2,186,000

(2023 figures)

4.72

TEN YEAR PLAN

Albany NH16 & NH113

Albany Intersection of NH16 & NH113

Improve the safety of motorists and pedestrians at the intersection of NH16 and NH113. Includes realignment and grade/geometry improvements.

(Possibly will be redesigned as per recent NHDOT recommendations)



TEN YEAR PLAN

Albany NH16 & NH113



TEN YEAR PLAN

Albany NH16 & NH113

Project Strengths:

- Improves safety performance of important regional route
- Improves mobility of vehicles and freight
- Improves state of repair
- Supported by local residents, town officials, and state officials

Applicant Estimated Cost: \$3,406,200
(current designs, 2024)

Weighted Criteria Score:

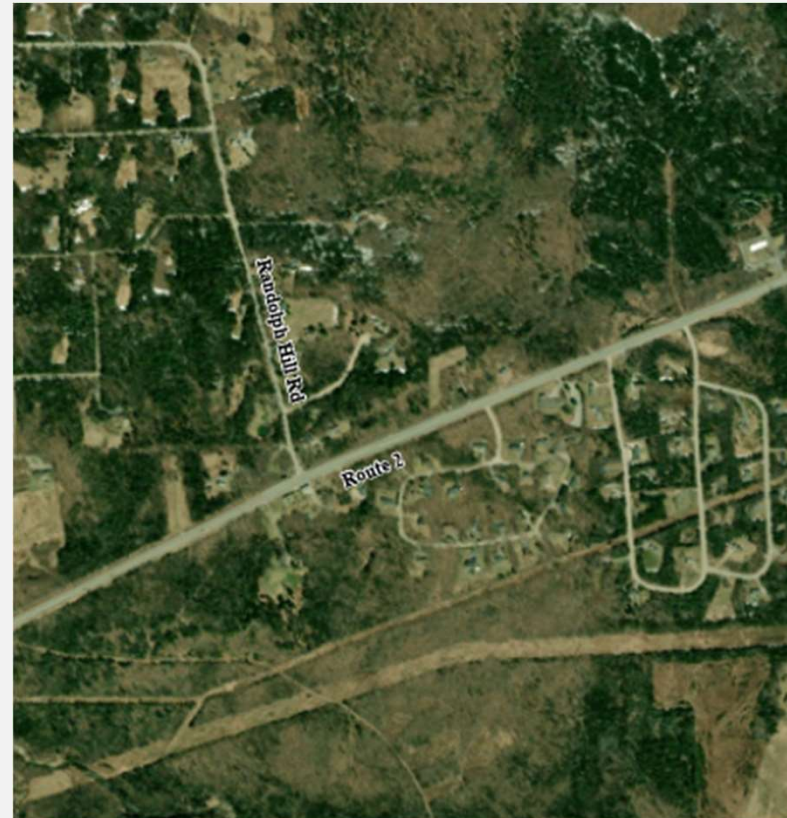


TEN YEAR PLAN

Randolph US2

Randolph US2 & Randolph Hill Rd & Raycrest Dr.

Widening of Route 2 to accommodate a turning lane and additional travel lane to improve safety of those entering and exiting the roadway at Randolph Hill and Raycrest intersections



TEN YEAR PLAN

Randolph US2

Intersection SE



Intersection NW

TEN YEAR PLAN

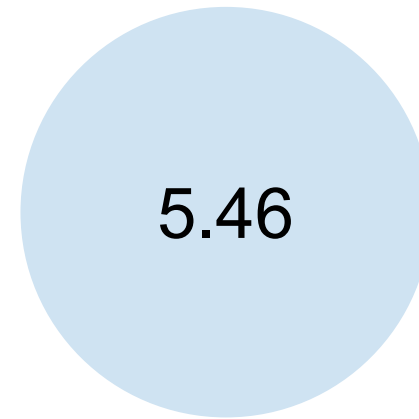
Randolph US2

Project Strengths:

- Improves safety for vehicles
- Improves freight on a major route
- Supported by many residents and local officials

Applicant Estimated Cost: \$ 4,412,000
(2022 design)

Weighted Criteria Score:



TEN YEAR PLAN

Bethlehem US302 Sidewalks

Bethlehem Sidewalks to Elementary School

Installation of 1,500 linear feet and 5 feet wide ADA sidewalk with granite curbing to Library and Elementary school.



TEN YEAR PLAN

Bethlehem US302 Sidewalks

Project Strengths:

- Improves safety of pedestrians and cyclists
- Improves mobility of pedestrians and cyclists
- Creates connection to local facilities
- Addresses accessibility
- Addresses drainage

Applicant Estimated Cost: \$765,000
(2023 design)

Weighted Criteria Score:

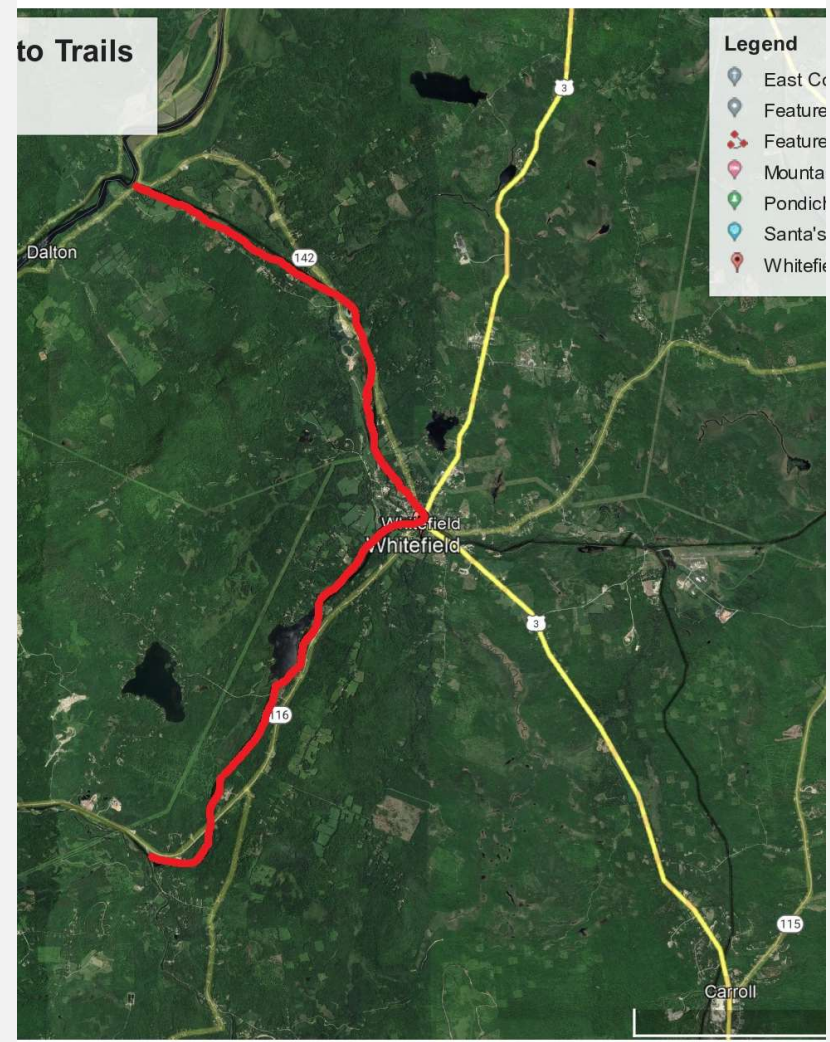


TEN YEAR PLAN

Whitefield Rail Trail

Whitefield Rails to Trails

Convert an unused and decaying rail corridor into a multi-use 4-season rail trail for residents and visitors to use for recreation and transportation. Includes 11.5 miles of railroad.



TEN YEAR PLAN

Whitefield Rail Trail

Project Strengths:

- Improves mobility of pedestrians and cyclists
- Supports local and regional economic development
- Addresses accessibility
- Improves state of repair of unused facility

Applicant Estimated Cost: \$4,100,000

(2024 estimated)

Weighted Criteria Score:



TEN YEAR PLAN

Sugar Hill Traffic Calming on NH117

Sugar Hill Traffic Calming

Install ADA compliant sidewalks and improve drainage through the town center (NH117 from Lover's Lane (near Church) to NH117 and S. Rd. Includes improvement of current Town Hall crosswalk and installation of crosswalk at Meetinghouse.

Includes safety improvements at scenic and historic location at eastern intersection of Lover's Lane and NH117



TEN YEAR PLAN

Sugar Hill Traffic Calming on NH117

Project Strengths:

- Improves mobility of pedestrians and cyclists
- Improves safety of vehicles, pedestrians, and cyclists
- Addresses accessibility
- Mitigates drainage concerns

Applicant Estimated Cost: \$2,186,000

(2023 design)

Weighted Criteria Score:



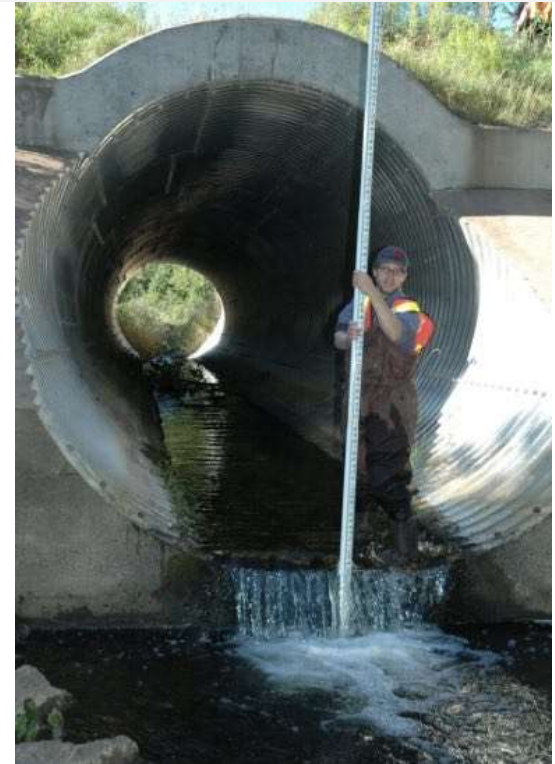
REGULAR UPDATES

NCC PROJECTS

- SADES Projects
 - » 3 Communities interested in RSMS
 - » Scheduling out to schedule out to 2025
- Traffic Counts
 - » Waiting on NHDOT approvals
 - » Local Counts

SCENIC BYWAYS

COMMUNITY UPDATES



REGIONAL TRANSPORTATION PLAN

- Working through Corridors
- Rewriting and updating data and maps
- Expanding Recommendations
- Updating Goals and Objectives



REGIONAL PLAN UPDATE

- Replacing 2014 Plan
- Region-wide outreach ongoing
- Developing Vision & Goals for next 10 years!
- Survey & interactive Map
- Take the survey!

The screenshot shows the North Country Council website. At the top is a dark blue navigation bar with links for Home, About, Focus Areas, Tools & Library, News & Events, and Contact. Below this is a large banner image of a lake and mountains with the text "North Country Council" and "Encouraging a Smart, Safe, Clean, and Cool North Country." A "Latest News & Events" button is visible in the banner. The main content area is divided into two columns. The left column is titled "Regional Plan Survey" and includes the text: "Let's plan the future of the North Country together! We are creating a new plan for the North Country Region and want to hear from you! Please take our survey to share your thoughts on housing, jobs, transportation, natural resources, recreation, and agriculture." Below this text is a green button that says "Take the survey now!". The right column is titled "Mapping Regional Elements" and includes the text: "As we work to build a new Regional Plan it's important to understand the region through the eyes of the people that live, work, and play here. Your input will help us create a vision for the Region." Below this text is a green button that says "Share your feedback here!". A central image shows people at an outdoor event looking at a map on a table.

FINAL THOUGHTS/COMMENTS

